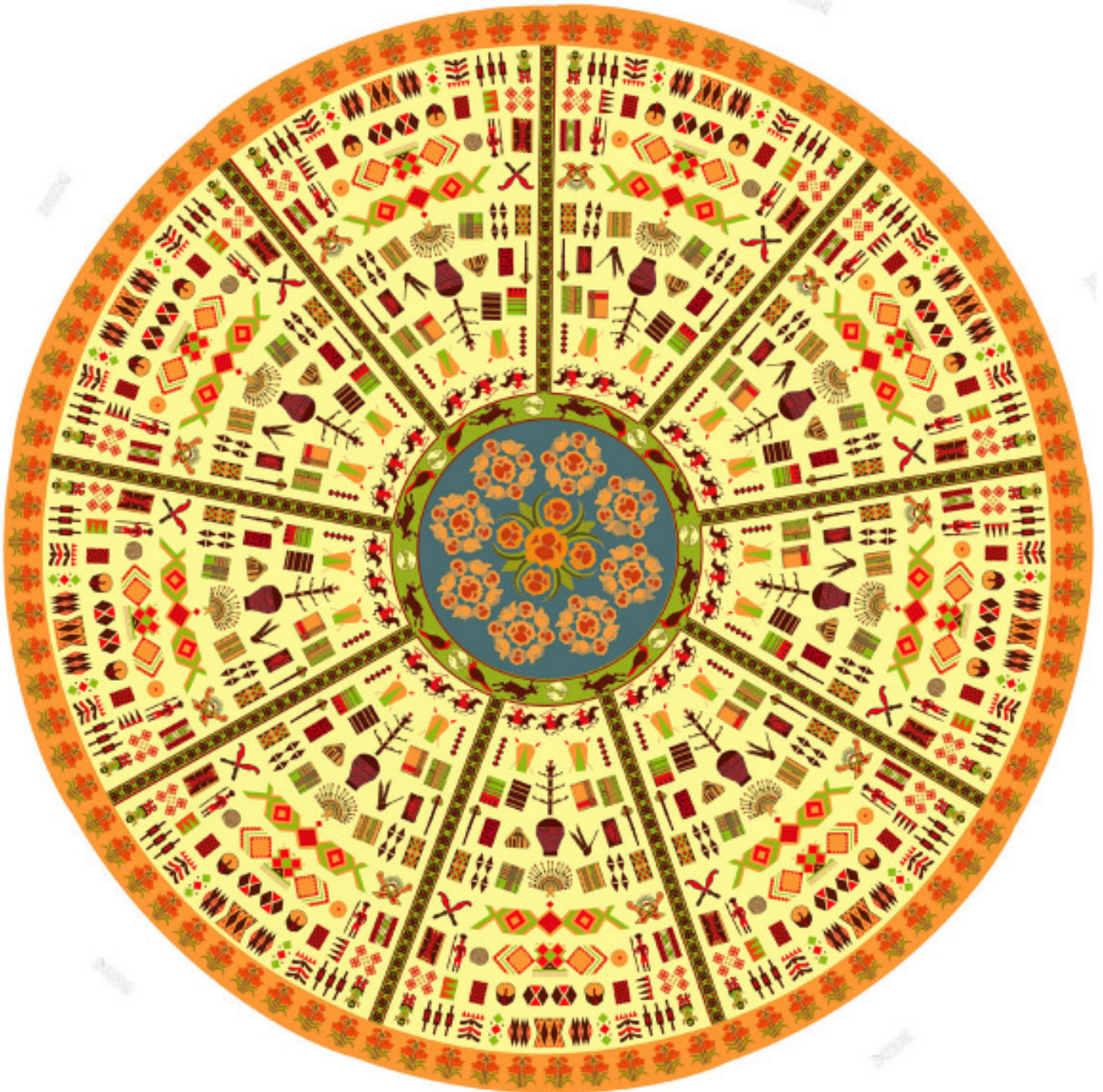




SHARMA ARTS & CRAFTS HOUSE

**KHONGMAN ZONE 3-EAST
IMPHAL EAST, IMPHAL - 1,
MANIPUR, INDIA**



**ANNUAL REPORT
2010-2012**

ANNUAL REPORT
2010-2012

CONTENT

Organization Profile	i
Organizational Chart	ii
Activities	1
Activities during 2010	1
Activities during 2011	2
Activities during 2012	3
Vision	5
Photo profile 1	6
Photo profile 2	7
Photo profile 3	8
Photo profile 4	9

ORGANIZATION PROFILE

Sharma Arts & Crafts House (SACH) is a premier house of fine arts and crafts based in Imphal, Manipur, with network outreach in Manipur, Delhi, Tripura, Assam and other States of India.

SACH located at a distance of 4 (four) Km from Imphal, the capital of Manipur at Khongman Zone-3 East, spreads over an area of 2.50 acre. SACH came into being in 1972, in a humble way, under the care of Guru B. Amusana Sharma who established himself as a well known traditional Sculptor & Painter of the state. He was a proficient shishya (disciple) of Guru Kalachand Singh, himself a proficient shishya (disciple) of the noted artist Guru Bhadra Singh. In 2004, it became a registered Trust under the Indian Trust Act 1882 to take care of the art properties contributed by its founder, Guru B. Amusana Sharma. He transferred the entire set up in favour of SACH. This is the first organisation that set up a modern foundry in the state to enhance the art of sculpture in a better way. SACH is a leading institution of arts and crafts in Manipur and has a spacious complex with facilities such as office, workshed, foundry, open air gallery, museum, library, showroom, exhibition ground.

SACH specializes in Statue and Creative Sculpture, Traditional and Creative Painting, Designing and Fabrication Work in medias of Bronze, Stone, Ceramic, Papier-mache, Fibreglass, Terracotta, Cast Iron and Aluminium.

SACH facilitates aspiring artists in the following ways :

- * SACH is engaged in nourishing young and talented artists.
- * SACH provides free studio facilities and working space to artists for non-commercial purposes.
- * SACH provides studio with foundry facilities and working space for commercial works on payment.
- * SACH gives training to youth on various skills in traditional painting and allied crafts.
- * SACH provides space for exhibition for artists free of cost at the SACH complex.
- * SACH promotes local craftsmen in inventory works, and also sell their products.

SACH organizes various collaborative programs, such as :

- * Metal casting workshop.
- * Local doll and toy making workshop.
- * Traditional painting workshop.
- * Traditional wood carving workshop.
- * Training programs for young artists and artisans in Rug dolls, toys and traditional painting.
- * Theatre workshop.

SACH organizes annually **SACH Festival of Arts & Crafts**, and other festivals like **Sand Art Festival**. SACH also participates in State and Regional level exhibitions on arts & crafts.

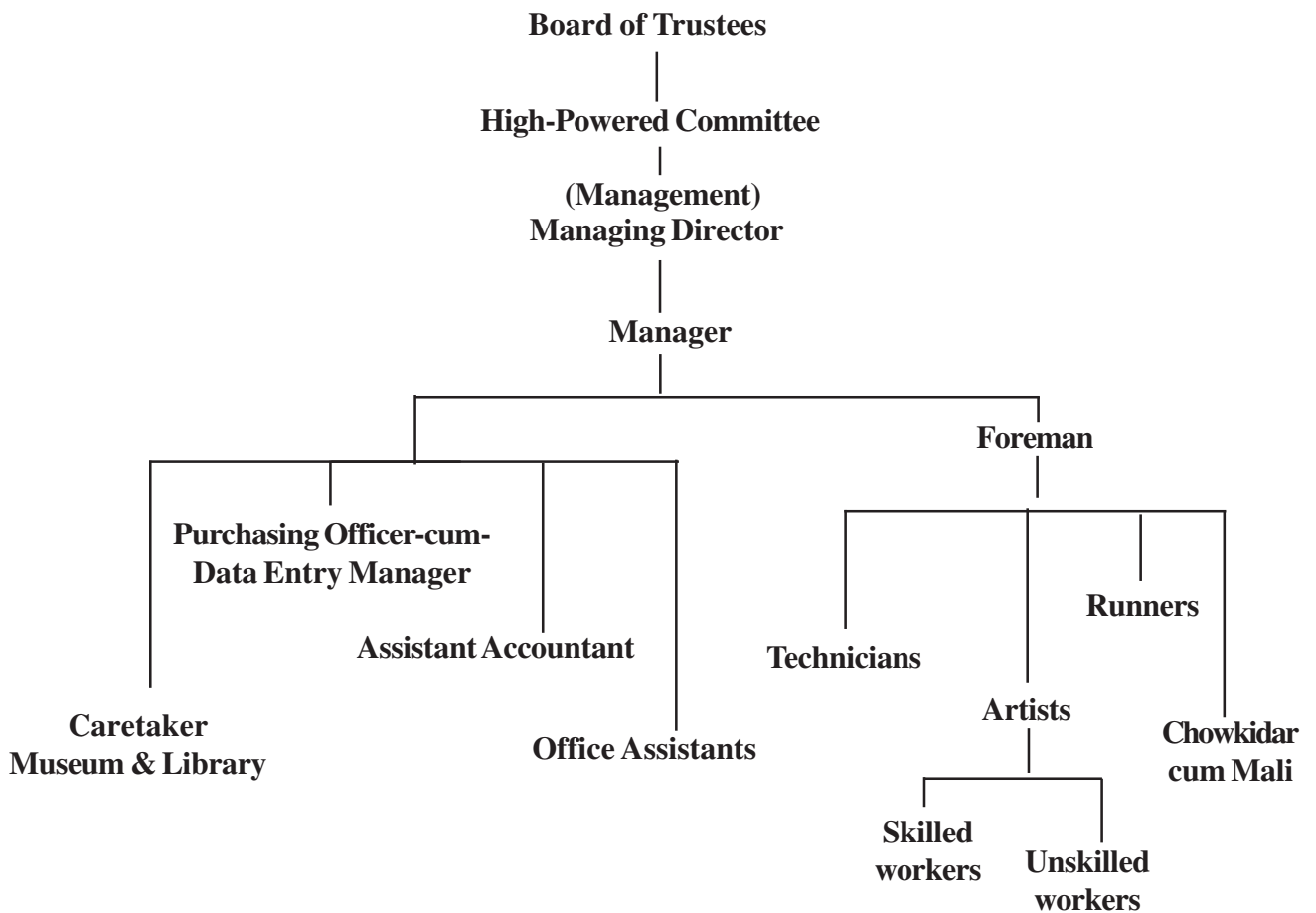
Head Office:

Sharma Arts & Crafts House (SACH)
Khongman Zone 3-E, Imphal East - 795 001
Manipur, India.
web: www.sach-manipur.com
email: sach_manipur@yahoo.com
Cell: 0385-2457776, 9862029891

Silchar Branch:

R 10, Sivalink Park
Meherpur, Silchar - 780015
Assam, India.
Cell: 03842-240176, +91-9435070254

ORGANIZATIONAL CHART



Activities

SACH Programs during 2010-2012

Activities during 2010

1. SACH Festival of Arts & Crafts 2010

SACH organized its annual SACH Festival of Arts & Crafts at its sprawling Cultural Complex for three days from February 20-23, 2010. The Festival showcased a variety of programs including exhibition and sale of traditional crafts and folk art paintings, folk art performances, and as a special treat an interesting experimental art by well known artist Rabin Bar from Assam. Potters from Andro village, *Potloi* and *Shamee Lanmee* artisans, local traditional painters, *Shattrra* craftspersons, contemporary sculptor from Kolkata, etc. participated in the crafts exhibition of the Festival. Young artists performed *Khubak-ishei* on the opening day of the Festival.

The Festival was opened by MLA Dr.Kh.Ratan Kumar as Chief Guest on February 20. Shri T.N.Haokip, Minister for Tourism, attended the closing function of the Festival on February 23. Artist Rabin Bar did a quick one-minute sketch of the Hon'ble Minister, and the sketch was presented to the Minister.

2. NSD Children's Theatre Workshop

The National School of Drama (NSD), New Delhi in collaboration with SACH held a month-long theatre workshop (13th May - 13th June, 2010) for children at the SACH cultural complex under the supervision of Salim Arif from Mumbai.

The centre-piece of the workshop was the production of a play '**Shantigee Shayon**'. It is an interesting culmination of a rather peculiar tie-up between NSD, a national institution of theatre, and SACH, an institution of visual arts. Perhaps it was NSD's yearn for greener pastures that brought SACH into the theatre scenerio, quite out of way of its usual activity of murals, painting, sculpture, wood carving, ceramics and clay modelling. Nonetheless, it was a challenging task for all those at SACH to engage in the month-long children's theatre workshop which NSD had entrusted to SACH in full confidence and zeal. The response from the children participating at the workshop, with full support of their parents, was overwhelming. They learnt dance, martial arts, clay modelling, singing, meditation and theatre in one go. The dark monsoon clouds hovering overhead, the incessant rain and the social turmoil in the State did not detered the enthusiasm of the children. They were one in their play, learning the ropes together. The message of the play is very much relevant to us all - "*We want peace. Let us shun violence and lead the life of peaceful co-existence*".

Workshop Director Salim Arif noted : "The purpose of a workshop with children is to provide them with an opportunity to explore aptitude in areas which generally have little or no space in their regular academic curriculum. The month long exploration with exposure to acting, dance, music, visual and plastic arts inculcates awareness about performing arts in them besides generating passionate interest in Theatre as a composite art form. The purpose of the workshop is not to create actors, dancers. It is the use of theatre as a medium or tool of engaging the faculties of the youngsters which makes these workshops quite relevant in their overall growth. It stimulates their young



School children participating at the NSD Children's Theatre Workshop at SACH cultural complex.

curious minds to work in a non formal environment. The presentation of a play at the culmination of these four weeks provides an added incentive for these children to be on stage in a performance situation. The ability to work in a team as responsible individuals becomes an important part of learning for these participants”.

3. Fabrication of Model of Shree Shree Govindajee Temple

SACH developed a model of the Shree Shree Govindajee Temple in fibre glass for the Sai Baba devotees in Manipur. The temple model was later installed at the Prasanti Nilayam complex in Andhra Pradesh during 2010.

4. Installation of Meira Paibi statues

SACH developed and installed three life-size statues of Meira Paibi (women torch bearers) in fibre glass. The statues measuring 9 feet in height were installed at Khurai Salangthong in Imphal East District, Manipur during 2010.

Activities during 2011

1. SACH participation in Manipur Sangai Festival 2011

The Manipur Tourism Department entrusted SACH with the big responsibility of designing and implementing the stage for the main cultural venue of the Manipur Sangai Festival 2011 at the Bhagyachandra Open Air Theatre (BOAT) at Palace Compound, Imphal. The SACH team led by well known artist B.Banamali Sharma executed the task admirably well in time, winning applause and creditability.

2. Decoration design of Dome of Manipur Legislative Assembly new building.

The decoration design of the interior of Dome is divided into ten portions. The centre piece as seen in the layout above, and the corresponding nine panels around it represent the geographic situation of Manipur and of the various ethnic communities residing in different locations of the State. The centre of the design features floral motif of the orchid. The nine panels, each of which measures 26 feet in length, are painted in oil with motifs representative of the culture, custom and tradition of the ethnic communities of Manipur. The decoration design of the dome was conceptualized and developed by artist B.Banamali Sharma.

3. Construction of monumental sculpture ‘Shanti Doot’.

SACH artists and workers engaged in various assignments during 2010-2011. Among one of the important assignments currently being taken up by SACH is the construction of a monumental sculpture ‘Shanti Doot’ under the supervision of artist B.Banamali Sharma. The monumental sculpture is a model of a Raas dancer in traditional costume *Potloi* and is projected as a landmark of peace, harmony and integrity among the different communities living in the country. At the completion of the project, around a thousand artists from all over the country will work on the monumental sculpture and leave a mark of their art work on the model.

Social worker Thongam Bishwajit of Thongju Assembly Constituency partially supported the construction of the RCC base for the monumental sculpture with supply of construction material. The foundation for the monumental sculpture was begun with funds gained as profit out of assignment jobs taken up by SACH.



Construction of base for ‘Shanti Doot’ under progress at the SACH cultural complex.

4. Installation of 20 ft. high statue of Maharaja Gambhir Singh at Langthabal.

SACH developed and installed a larger-than-life size statue of the Manipur king, Maharaja Gambhir Singh at the Maharaja's samadhi at Langthabal in Imphal West District, Manipur. The 20 feet tall statue was commissioned by the Government of Manipur through the Department of Art & Culture. The statue was developed under the supervision of sculptor B.Banamali Sharma.

5. Installation of 12 ft. high statue of Maharaja Gambhir Singh at Manipur University.

A 12 feet high statue of Maharaja Gambhir Singh in fibre glass was developed and installed by SACH at the Manipur University campus at Canchipur, Imphal West District. The statue was commissioned by Manipur University.

6. Installation of sculpture piece 'Atithi Seva' at the Manipur Legislative Assembly complex, Chingmeirong.

A sculpture piece titled as 'Atithi Seva' was developed and installed by SACH at the new campus of the Manipur Legislative Assembly at Chingmeirong in Imphal East District, Manipur. The work was commissioned by the Government of Manipur. The sculpture is a replication of a similar work earlier developed and installed by SACH at the old Manipur Legislative Assembly complex in Imphal. The earlier piece was designed and developed under the supervision of Master Sculptor, Guru Brahmacharimayum Amusana Sharma, founder SACH, while the later sculpture piece was developed under the supervision of sculptor B.Banamali Sharma.

Activities during 2012

1. Inauguration of Showroom

A new Showroom of SACH was opened to the public on 5th April, 2012. Eminent lyricist, Shri B.Jayenta Kumar Sharma inaugurated the Showroom. Craft products by local artisans, and traditional & contemporary paintings, and sculptures by artists of Manipur are on display for sale at the Showroom.

2. Inauguration of Museum cum Library

Eminent artist and National Awardee, Shri Thoidingjam Tombi Singh inaugurated a new Museum cum Library building of the Sharma Arts & Crafts House, Khongman on 5th April, 2012. The Museum in-houses paintings by local traditional painters including Traditional Master Painter, Guru Brahmacharimayum Amusana Sharma.

3. Inauguration of Studio Building

Shri R.K.Nimai, IAS, Secretary to H.E. the Governor of Manipur & Commissioner, Art & Culture, Manipur inaugurated a new Studio Building of SACH at its Cultural Complex on 5th April, 2012. The Studio Building will facilitate free studio facility and equipments to artists from Manipur and other places. SACH has been providing free studio facilities to local artists and others for the past five years.

4. Performance of Contemporary Dance

An evening of contemporary dance was held at the SACH Cultural Complex on 15th April, 2012. Performer/choreographer Surjit delighted the spectators with a solo dance at the SACH's open air gallery. Karoline Kent from England performed on an unusual platform to the rhyme of delicate hand movements of clay modelling by artists B.Banamali Sharma and Bobby. Live performance and screening of dance-art films were also shown to the spectators at the end of Karolin's

performance. The programme was organized under SACH's objective of providing free space facility to artists.

5. Exhibition of Installation Art

A three-day exhibition of Installation Art was held at the Open Air Gallery of SACH Cultural Complex from 6th April till 8th April, 2012. The exhibition was opened by Smt. Moushmi Kandali, eminent Art Critic from Guwahati (Assam). The exhibition was participated by eight contemporary artists of Manipur, namely, (i) R.K. Thambalsana Singh, (ii) B. Ruma Sharma, (iii) LM Sotis, (iv) Y. Motilal, (v) Maibam Maningou, (vi) B. Mahendra, (vii) S. Imobi Sharma, and (viii) B. Banamali Sharma.

6. Performance of MAYA-II experimental art

An experimental site specific experimental art titled as 'Maya-II' was performed by artists Surjit and Karolin Kent on 5th April, 2012 at the Open Air Gallery of SACH Cultural Complex. The duo performed in the backdrop of sculptures by eminent artists B. Banamali Sharma, B. Ruma Sharma and others. The performance was organized with the objective of giving impetus to young artists on multi-media art experimentation. 'Maya-II' is conceptualized, developed and presented by B. Banamali Sharma, Sculptor, in collaboration with Karolin Kent, performance and visual artist from Gothenburg, Sweden along with Surjit Nongmeikapam (Bonbon), performing artist from Manipur.



Surjit (left) and Karoline Kent (right) performing the experiment art 'Maya-II'.

The theme of Maya-II is briefly underlined as "Human beings have never ceased to explore his near and distant surroundings. He knows that there is a limiting end, and within this conceptual restraint the past becomes a measuring means to look out for more endeavours. A thirst for the horizontal future takes him to heights of possibilities.

The episodic flashes of the real and the unreal, truth and its opposite, perceived and physically handled – never follow a pattern after sometime. His actions are followed by a plethora of being complete, and the ones that remain unfinished. A dualism is always present.

The past, the present and the future have been thinly divided grounds. Within their ephemeral existence Maya is an experiment against the backdrop of contemporary art. It is expected to be a present, an effort rarely seen; the viewer is let into a world of awareness and a vision that will remain etched on the memory. Maya is that feeling that will coagulate after having had a pre and post adventure into the exhibit; this may be on the emotional and physical levels".

Vision

SACH during 2012-2014

In the next two financial years, that is, during 2012-2014, SACH proposes to continue with its existing programmes on the one hand, while on the other hand, the organization aims at taking up new and innovative programmes that could have some impact in State and regional levels. Some of the proposed programmes of SACH are:

1. Landscape development of SACH Cultural Complex

SACH has a long-standing objective of expanding its activities by developing its infrastructure and facilities within the campus. With this objective in mind, SACH had extended its campus by acquiring a plot of land adjacent to its eastern side, and in the next few years SACH proposes to develop the campus with facilities such as amphi-theatre, exhibition stalls, light and sound display, open-ended Mandapa for live demonstrations and exhibitions, conferences, etc.

2. Completion of the monumental sculpture ‘Shanti Doot’

In its effort to achieve a singular landmark that could have both regional and national impact, SACH has been continuously pursuing its objective of completing the monumental sculpture titled as ‘Shanti Doot’. The project was initially taken up with its own funds, however, due to constraints of funds, assistance was sought from philanthropists and government bodies. So far, few individuals had stepped forward to support the project in their respective capacities. Whereas, the project remains incomplete. So, SACH proposes to find support to complete this project well in time. The monumental sculpture promises to be a landmark attraction for the State.

3. Artists Camps, Training programmes

SACH proposes to tie up with national institutions like Lalit Kala Kendra, New Delhi; Victoria Museum, Kolkata; Eastern Zonal Cultural Centre, Kolkata, etc. in hosting artists camps and training programmes at the regional and national levels. SACH also proposes to apply to the Department of Culture, Ministry of Human Resources Development, Government of India for organization of similar programmes.

4. SACH Festival of Arts & Crafts 2013

In continuing with its annual feature, which basically marks the foundation day celebration of the organization, SACH proposes to organize the next edition of its Festival of Arts & Crafts 2013 during February, 2013. Traditional painters and craftspersons, contemporary artists, sculptors, modellers, etc. would be invited to the Festival.

5. State level Workshop on Women Artisans

SACH proposes to organize a State level workshop on Women Artisans of Manipur with support from the Department of Art & Culture, Manipur and the North East Zone Cultural Centre, Dimapur during the current financial year 2012-2013. The project has been recommended by the Government to NEZCC for sanction.

Photo profile 1

Important landmarks undertaken by SACH.



Bronze statue of Maharaja Gambhir Singh, developed and installed by SACH at the Maharaja's samadhi at Canchipur.



Sculpture in Bronze titled as 'Atithi Seva' developed and installed by SACH at the new Manipur Legislative Assembly complex, Chingmeirong, Imphal East.



Three larger-than-life statues of Meira Paibi were developed by SACH and installed at Salangthong in Imphal East District.

Photo profile 2

SACH Festival of Arts & Crafts 2010

SACH organized a Festival of Arts & Crafts at its sprawling cultural complex for three days during January 20-22, 2010. The Festival showcased a mix of events - experimental art by Rabin Bar; exhibition of traditional crafts; and folk art performances.



MLA Dr.Kh.Ratan Kumar lighting the inauguration lamp.



Craftspersons at the Festival - Shamee Lanmee (top) & Potloi (bottom).



Artist Rabin Bar sketching a free-hand portrait of Tourism Minister TN Haokip during the Festival.

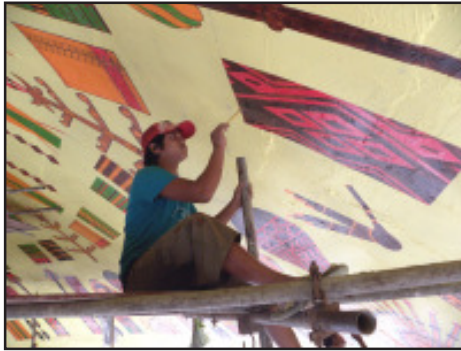


Child artistes performing *Khubak-ishei* at the opening function of the Festival.

Photo profile 3



The Government of Manipur entrusted SACH with the responsibility of designing and implementing the mural on the ceiling of the impressive dome of the newly constructed Manipur Legislative Assembly building (seen in the photographs on the left and below).



An artist working on a textile motif of the decoration design on the interior of the Dome.

Guru B. Amusana Sharma (Founder, SACH), K. Tejmani Sharma (Chairman, SACH) and artist B. Banamali Sharma (L-R) at the reception.



Reception of the artists team who worked at the decoration design of interior of Dome of Manipur Assembly building.



Photo profile 4

SACH's participation at the Manipur Sangai Festival 2011.



Stage design by SACH for Manipur Sangai Festival 2011.



The SACH team which performed the experimental 'Maya' at the Manipur Sangai Festival 2011 on November 22.

Published by the **Sharma Arts & Crafts House (SACH),
Khongman Zone 3-E, Imphal East District, Manipur.**

Published in February 2013.

Layout & Edited by Salam Rajesh.

Photographs by Kesho.

For private circulation only.

Printed at the nest advertising pvt. ltd., Babupara, Imphal-1, Manipur.

For information please contact :

SACH (Sharma Arts & Crafts House)

Khongman Zone 3-E, Imphal East - 795 001

Manipur, India.

web: www.sach-manipur.com

email: sach_manipur@yahoo.com

Cell: 9856108116, 9435070254, 9862029891